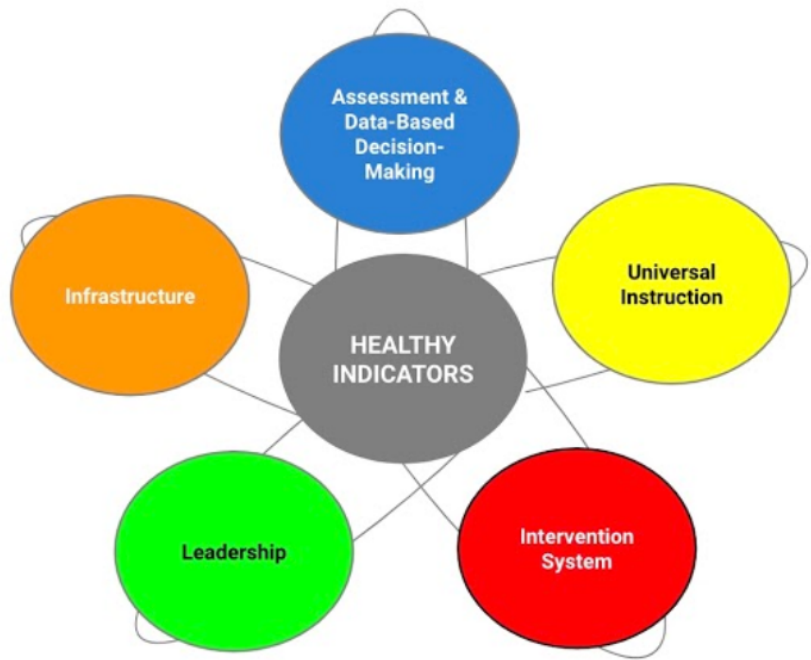


The Work

Ensuring all learners are successful in the Iowa Academic Standards and social-emotional-behavioral learning competencies through an MTSS framework that is supported and sustained through Iowa's Differentiated Accountability system.



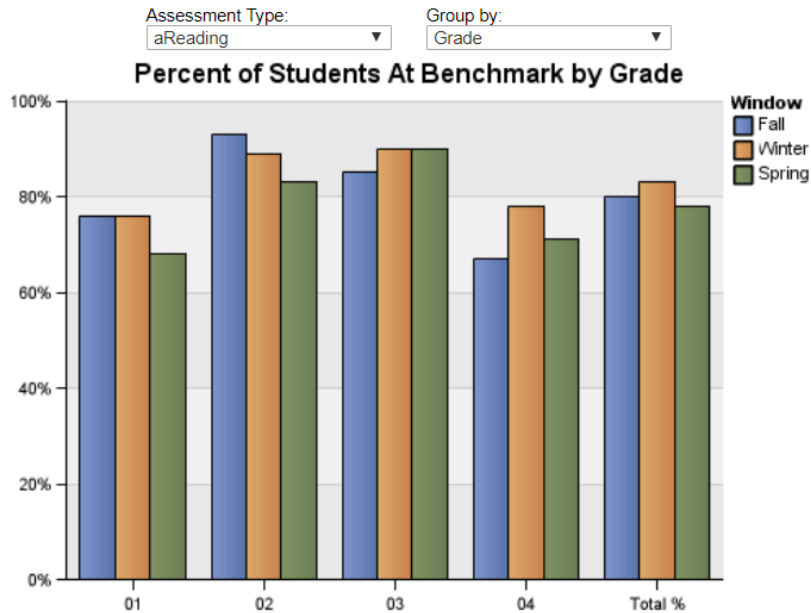
HOW TO USE OR INTERPRET THIS REPORT

This report summarizes screening results for the district-defined universal screener and by specific screening assessments. Students scoring at or above benchmark are considered to be at low risk for reading difficulty while students scoring below benchmark are at risk for reading difficulty and require school actions to reduce and eliminate the risk. A high percentage of students not meeting benchmark indicates a need to make adjustments to universal or core instruction to meet the needs of a greater proportion of the student population. Schools with significantly less than 80% of students meeting benchmark are encouraged to review their universal instruction with support from the Universal Instruction Facilitation Guide and other related resources that are part of the MTSS and differentiated accountability supports.

Color coding in the data table indicates the level of concern and need for support through differentiated accountability.

Category	Color
0-59%: red (intensive support)	Red
60-79%: yellow (supplemental support)	Yellow
80-100%: green (universal support)	Green

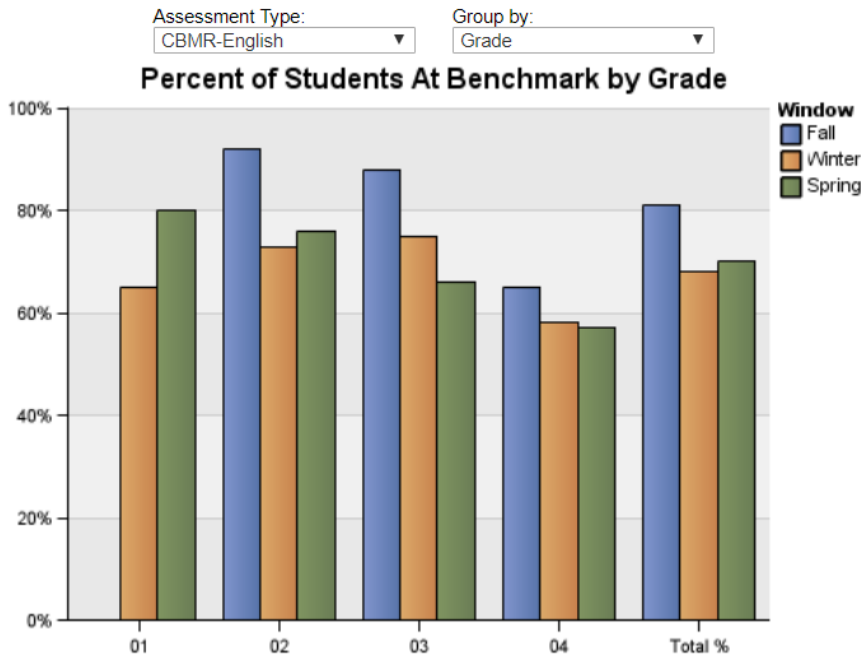
**HI 3.2 Percent of Students At Benchmark on a Valid and Reliable Literacy Assessment
Humboldt Community School District (3060)
2017-2018**



Subgroup	Window	Meeting Benchmark	Screened	% Meeting Benchmark
01	Fall	70	92	76%
	Winter	67	88	76%
	Spring	60	88	68%
02	Fall	77	83	93%
	Winter	74	83	89%
	Spring	69	83	83%
03	Fall	67	79	85%
	Winter	76	84	90%
	Spring	73	81	90%
04	Fall	60	89	67%
	Winter	69	89	78%
	Spring	63	89	71%

Window	Total Meeting Benchmark	Total Screened	Total %
Fall	274	343	80%
Winter	286	344	83%
Spring	265	341	78%

**HI 3.2 Percent of Students At Benchmark on a Valid and Reliable Literacy Assessment
Humboldt Community School District (3060)
2017-2018**



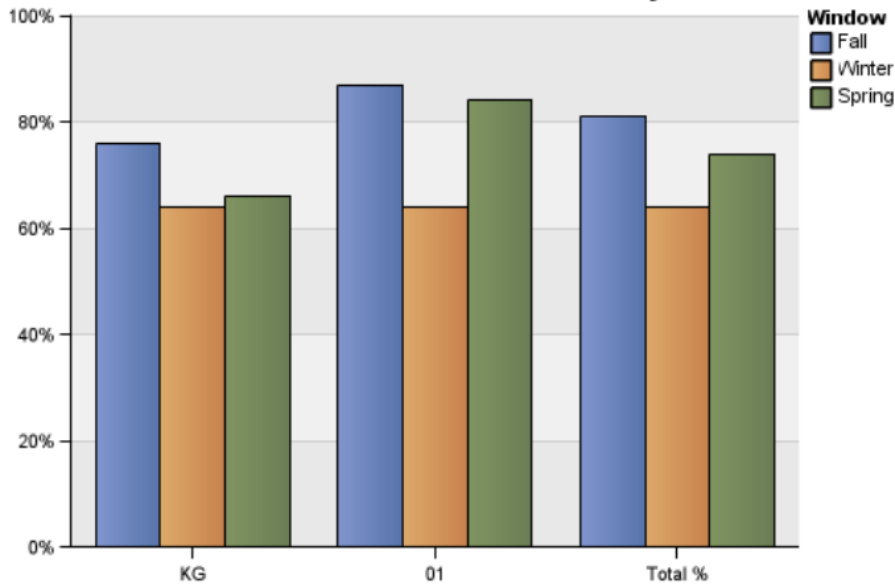
Subgroup	Window	Meeting Benchmark	Screened	% Meeting Benchmark
01	Winter	58	89	65%
	Spring	70	88	80%
02	Fall	76	83	92%
	Winter	60	82	73%
	Spring	62	82	76%
03	Fall	69	78	88%
	Winter	61	81	75%
	Spring	53	80	66%
04	Fall	58	89	65%
	Winter	52	89	58%
	Spring	51	89	57%

Window	Total Meeting Benchmark	Total Screened	Total %
Fall	203	250	81%
Winter	231	341	68%
Spring	236	339	70%

**HI 3.2 Percent of Students At Benchmark on a Valid and Reliable Literacy Assessment
Humboldt Community School District (3060)
2017-2018**

Assessment Type: Group by:

Percent of Students At Benchmark by Grade



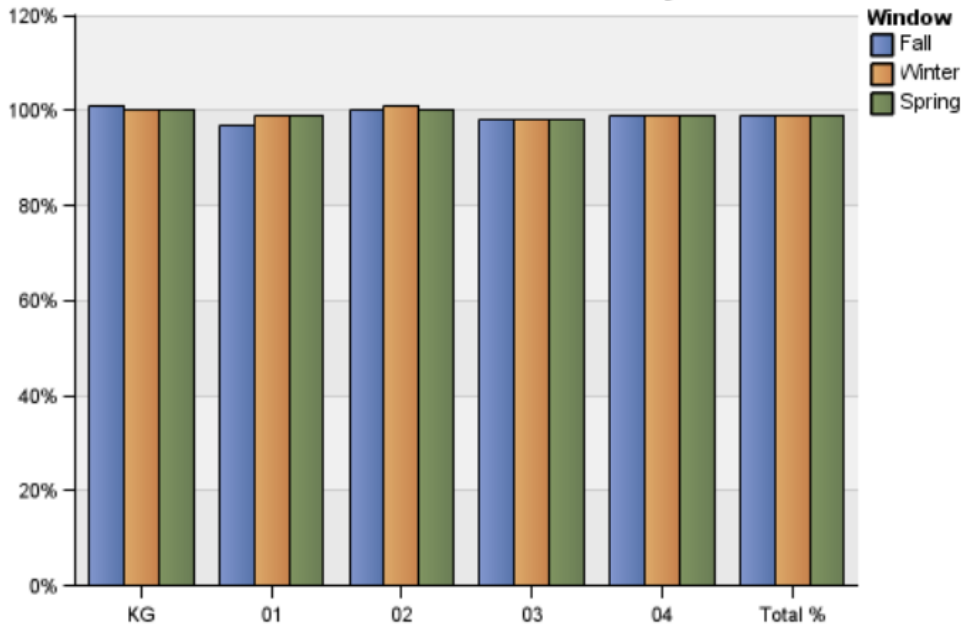
Subgroup	Window	Meeting Benchmark	Screened	% Meeting Benchmark
KG	Fall	87	114	76%
	Winter	74	115	64%
	Spring	75	114	66%
01	Fall	79	91	87%
	Winter	57	89	64%
	Spring	74	88	84%

Window	Total Meeting Benchmark	Total Screened	Total %
Fall	166	205	81%
Winter	131	204	64%
Spring	149	202	74%

HI 3.1 Percent of Students Screened on a Valid and Reliable Literacy Assessment Humboldt Community School District (3060) 2017-2018

Assessment Type: Group by:

Percent of Students Screened by Grade



Subgroup	Window	Screened	Enrolled	% Screened
KG	Fall	114	113	101%
	Winter	115	115	100%
	Spring	114	114	100%
01	Fall	91	94	97%
	Winter	89	90	99%
	Spring	88	89	99%
02	Fall	83	83	100%
	Winter	83	82	101%
	Spring	83	83	100%
03	Fall	79	81	98%
	Winter	84	86	98%
	Spring	81	83	98%
04	Fall	89	90	99%
	Winter	89	90	99%
	Spring	89	90	99%

Percentages above 100% may occur because the Screened values are obtained from counts of students who took FAST assessments while the Enrollment counts come from the Fall SRI collection. These may represent slightly different snapshots of students due to differences in the dates the data were collected.

Window	Total Screened	Total Enrolled	Total %
Fall	456	461	99%
Winter	460	463	99%
Spring	455	459	99%